

PARTS LIST		PORTABLE AUTOMATIC DEWATERING PUMP			9/24/2014	
ITEM	PART No.	DESCRIPTION	QTY	SIZE	MATERIAL	NOTES
1	001-007-41	Cabtyre Cable Set (50') 115V-60Hz(USA)	1	VCT3Cx2mm2(CSA3P)	LBD	
	001-002-06	Cabtyre Cable Set (50') 230V-60Hz(USA)	1	VCT3Cx2mm2	LBD	
2	140-446-12	Hex.Bolt (w/Plain Washer)	2	M5x38	SUS304	
3	003-190-10	Gland	1		SUS316	
4	114-000-93	Relay Unit 115V-60Hz(USA)	1Set	EL-BP-100		
	114-000-94	Relay Unit 230V-60Hz(USA)	1Set	EL-2P-200		
5	140-000-13	Hex.Bolt (w/Plain Washer)	2	M8x65	SUS304	
6	068-000-06	Handle	1	LB-250/480-52/62	Resin	
7	141-144-10	Hex.Nut (w/Flange)	2	M8	SUS304	
8	032-426-18	Hose Coupling 115V-60Hz(USA)	1	NPT-2(LB-480-51/61)	ADC	
	032-426-18	Hose Coupling 230V-60Hz(USA)	1	NPT-2(LB-480-51/61)	ADC	
	181-001-18	Hose Band	1	55mm(d50)		
9	121-587-17	Packing	1	LB-250/480-51/61	NBR	*
10	065-000-22	Outer Cover	1		SPC	
11	122-453-16	O-Ring	1	172xd2.7	NBR	*
12	121-434-18	Packing	1	LB3-250/480	Synthetic Rubber	*
13	051-000-55	Head Cover	1		ADC	
14	140-396-16	Hex.Bolt (w/Plain Washer)	3	M6x20	SUS304	
15	121-546-14	Packing	1	d120xd142x6.2t	NBR	*
16	076-000-47	Capacitor 115V-60Hz(USA)	1	66MF-270VAC(d51x70L)		
	076-000-48	Capacitor 230V-60Hz(USA)	1	20MF-500VAC(d51x70L)		
17	143-085-21	Pan Screw (w/Spring Washer)(1st)	1	M4x6	SWRM	
	143-086-22	Pan Screw (w/Spring Washer)(2nd)	1	M4x8	SWRM	
	127-000-99	Capacitor Fixing Plate	1	d51(1.0t)	SPC	interchangeable with OLD part# 127-000-46
19	009-001-03	Intermediate Lead Wire	1Set	AWG16x160(red)		
20	009-001-42	Intermediate Lead Wire	1Set	AWG16x80(Indigo)		
21	143-000-43	Truss Screw	2	M4x8	SWRM	
22	053-001-96	Motor Protector 115V-60Hz(USA)	1	KA142-LABL22F	(T.C)	
	053-002-00	Motor Protector 230V-60Hz(USA)	1	KA142-LYVL22F	(T.C)	
23	009-001-02	Earth Terminal	1Set	UL1015-AWG18,G/Y,L=160		
24	143-203-14	Pan Screw	1	M4x5	C360	
25	050-000-61	Motor Bracket	1		SECD	
26	142-000-41	Wave Washer	1	#6201(T=0.4)	S65CM	
27	052-100-15	Bearing	1	6201ZZC3		
28	055-002-98	Rotor	1Set	w/Bearing		
29	061-180-17	Bearing Collar	1	d15.1xd20x1.6t	SS	
30	052-152-12	Bearing	1	6302ZZC3		
31	056-008-25	Stator 115V-60Hz(USA)	1Set			
	056-008-26	Stator 230V-60Hz(USA)	1Set			
32	064-001-27	Motor Frame	1		ADC	
33	122-133-17	O-Ring	1	G-110(109.4xd3.1)	NBR	*
34	025-291-10	Mechanical Seal	1	W-14VL	SSIC	
35	030-000-09	Oil Lifter	1	W-14VL	Resin	
36	029-000-72	Oil Casing	1	LB-750-51/61	ADC	

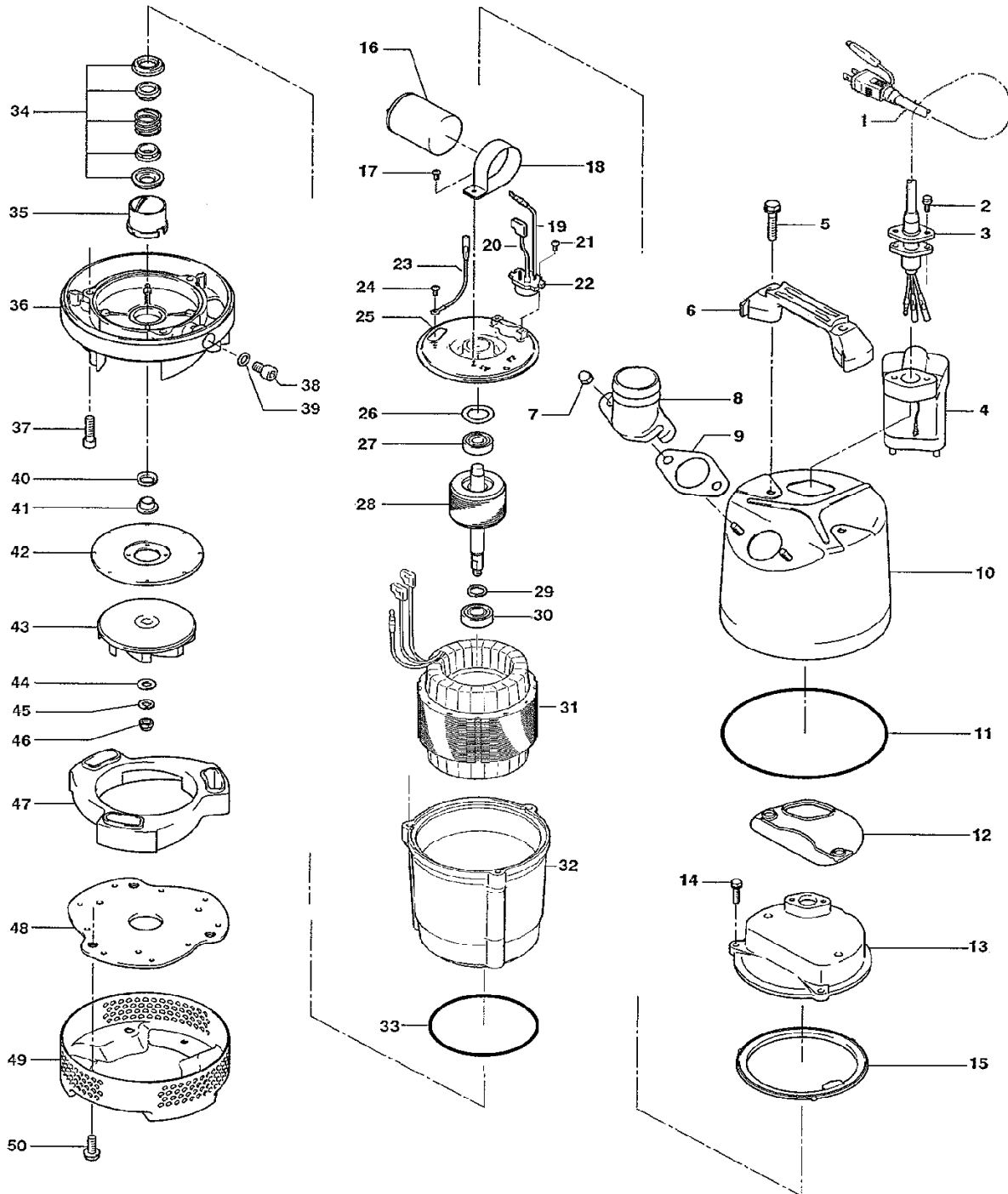
\* Indicates items included in set

PARTS LIST		PORTABLE AUTOMATIC DEWATERING PUMP			9/24/2014	
ITEM	PART No.	DESCRIPTION	QTY	SIZE	MATERIAL	NOTES
37	140-252-19	Hex.Socket Cap Bolt	3	M6x20	SUS304	
38	035-124-12	Oil Plug	1	M10x15	SUS304	
39	121-246-11	Packing	1	d10.3xd16x2t	PE	*
40	122-441-11	V-Ring	1	VR-14	NBR	
41	071-292-14	Shaft Sleeve	1	LB3-250/480	SUS304	
42	031-000-12	Wear Ring	1	LSC1.4S-51/61	SPC+Rubber	
43	021-007-56	Impeller (60Hz)	1	LB-800A-62	Urethane Rubber	
44	142-127-10	Plain Washer	1	M8	SUS304	
45	142-163-18	Spring Washer	1	M8	SUS304	
46	141-030-12	Hex.Cap Nut	1	M8	SUS304	
47	020-000-43	Pump Casing	1	LB-750	BR+NR	
48	022-001-27	Suction Cover	1	LSC1.4S-51/61	SPC+Rubber	
49	023-547-18	Strainer Stand	1	LB-250/480-51/61	SPCC	
50	140-000-14	Hex.Bolt (w/Plain Washer)	3	M8x20	SUS304	
	173-567-12	<b>Packing O-Ring Set</b>	1Set	(Marked by *)		
9	121-587-17	Packing (Hose Coupling)	1	LB-250/480-51/61	NBR	*
11	122-453-16	O-Ring (Out.Cover/O.Casing)	1	172xd2.7	NBR	*
12	121-434-18	Packing (Out.Cover/Head Cover)	1	LB3-250/480	Synthetic Rubber	*
15	121-546-14	Packing (Head Cover/M.Frame)	1	d120xd142x6.2t	NBR	*
33	122-133-17	O-Ring (M.Frame/O.Casing)	1	G-110(109.4xd3.1)	NBR	*
39	121-246-11	Packing (Oil Plug)	1	d10.3xd16x2t	PE	*
		Lubricant		Turbine Oil VG32 155ml		

PARTS LIST		PORTABLE AUTOMATIC DEWATERING PUMP				9/24/2014
ITEM	PART No.	DESCRIPTION	QTY	SIZE	MATERIAL	NOTES

## EXPLODED VIEW

LB 800A 52/62



C-01336-1